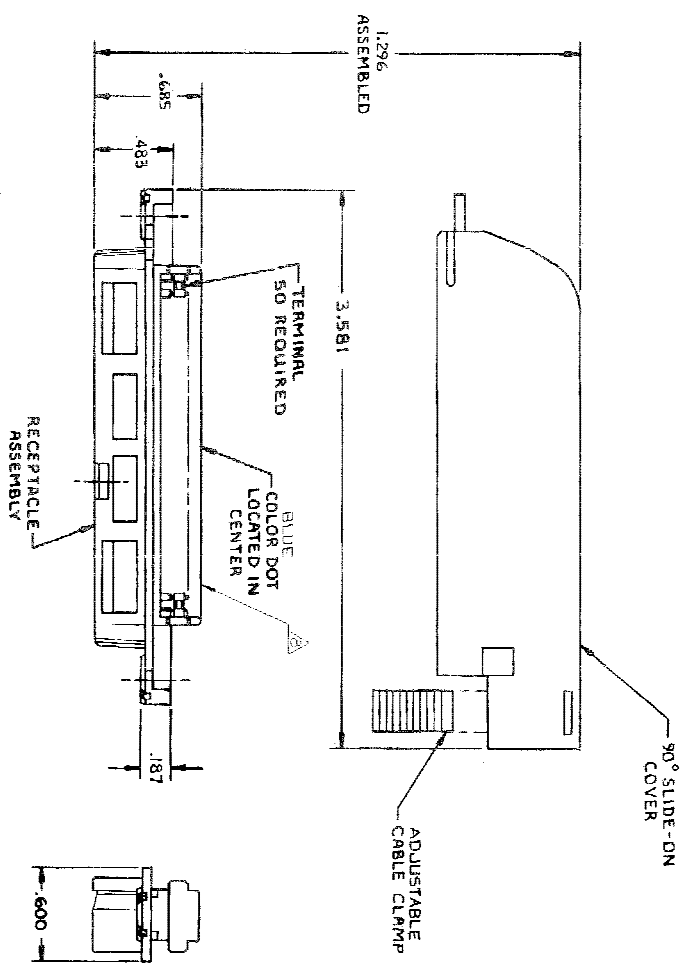
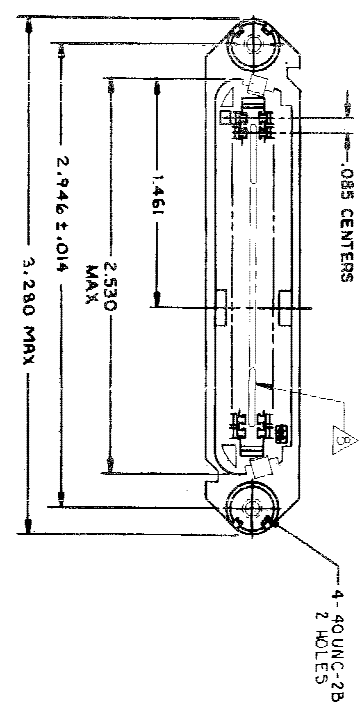


REVISED PER ESD-08-000528		REVISIONS	
DATE	BY	DESCRIPTION	DATE
2/1/NOV/04	ZR	WMA	



1. THE CONTACT SURFACES OF THE TERMINALS ARE COATED WITH LUBRICANT.
 2. ALL DIMENSIONS ARE REFERENCE ONLY UNLESS OTHERWISE SPECIFIED.
- △ MATERIAL:
- HOUSING, COVER AND CABLE CLAMP - THERMOPLASTIC (BLACK)
 TERMINALS - HIGH STRENGTH COPPER ALLOY PLATED WITH .000030 MIN GOLD OR GOLD FLASH OVER .000030 MIN PALLADIUM NICKEL ON CONTACT MATING SURFACE. .000050 MIN NICKEL UNDERPLATE OVER ENTIRE TERMINAL.
4. COVER AND CABLE CLAMP SHIPPED UNASSEMBLED.
 5. WIRE SIZE: 24 & 26 AWG SOLID OR 24 AWG 7 STRANDS OF COPPER CONDUCTOR. MAX INSULATION DIA OF .045 IS ACCEPTABLE FOR MOST APPLICATIONS.
 6. CABLE RANGE: .425 MAX DIA
 7. KIT SHIPPED IN POLYBAG FORM.
- △ CORING MAY OR MAY NOT APPEAR AND IS AT THE DISCRETION OF TYCO ELECTRONICS.



DIMENSIONS		TOLERANCES	
INCHES	MILLIMETERS	FRACTIONS	DECIMALS
0	0	AS SHOWN	± .0005
1/16	1.5	± 1/32	± .0015
1/8	3.175	± 1/16	± .0025
3/16	4.75	± 3/32	± .0037
1/4	6.35	± 1/8	± .0050
5/16	7.9375	± 3/16	± .0062
3/8	9.525	± 1/4	± .0075
7/16	11.1125	± 5/16	± .0087
1/2	12.7	± 3/8	± .0100
5/8	15.875	± 7/16	± .0112
3/4	19.05	± 1/2	± .0125
7/8	22.225	± 5/8	± .0137
1	25.4	± 3/4	± .0150

AMP 1471-9 REV 3/10/00

AS SHOWN	553912-1
DESCRIPTION	PART NO
TYCO ELECTRONICS CORPORATION HARRISBURG, PA 17105-5088	
KIT, RECEPTACLE 50 POSITION, IS SLOT CHAMP-LON THIN FLANGE	
REVISIONS TO	
CUSTOMER DRAWING	SCALE 2:1 SHEET 1 OF 1 REV G

553912